

# MYS Jazz Audition Scale Requirements

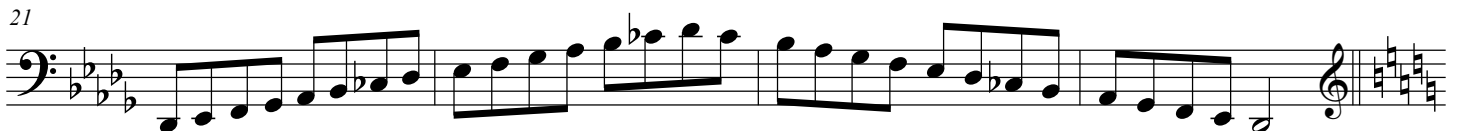
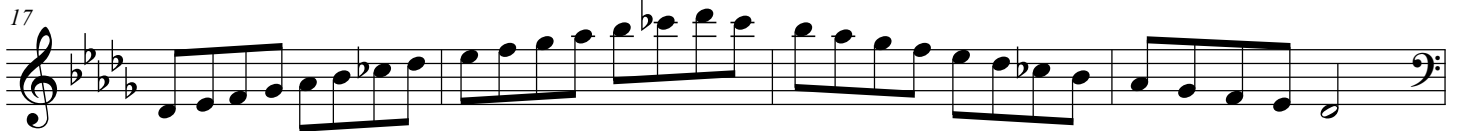
## Db Major



## Db Dorian



## Db Mixolydian



Chromatic

25



27



29

31

Detailed description: This block contains four staves of musical notation for a chromatic scale exercise. The first staff (measures 25-28) is in the treble clef and shows a chromatic scale starting on G4, moving up to G5. The second staff (measures 29-30) is in the bass clef and shows a chromatic scale starting on G2, moving up to G3. The third staff (measures 31-34) is in the bass clef and shows a chromatic scale starting on G3, moving up to G4. The fourth staff (measures 35-38) is in the bass clef and shows a chromatic scale starting on G4, moving up to G5. The notation includes various rhythmic values such as eighth and sixteenth notes, and rests.